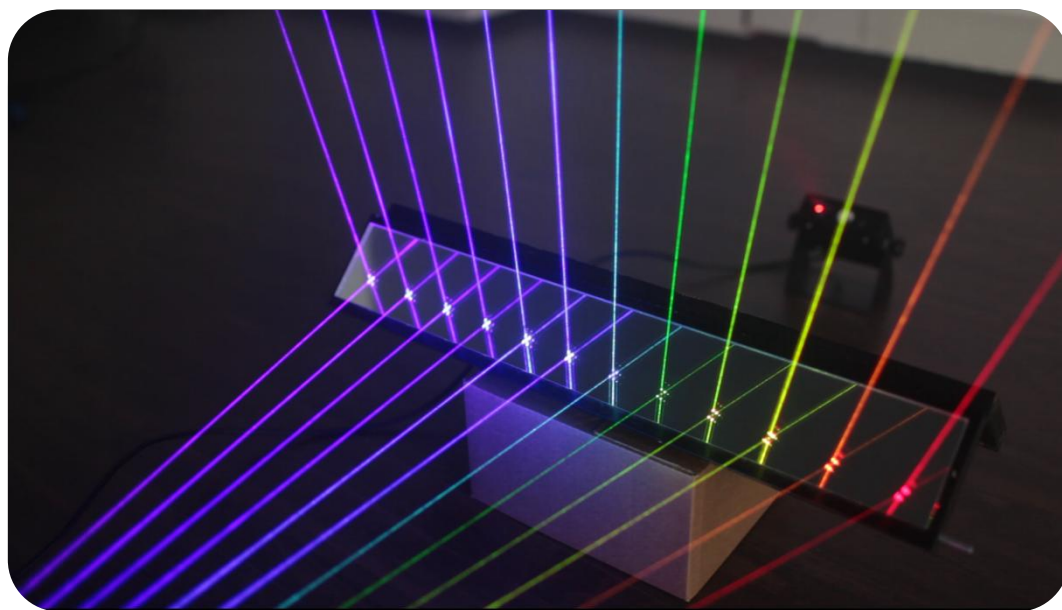


# **PHOENIX<sup>4</sup>** **LIVE**

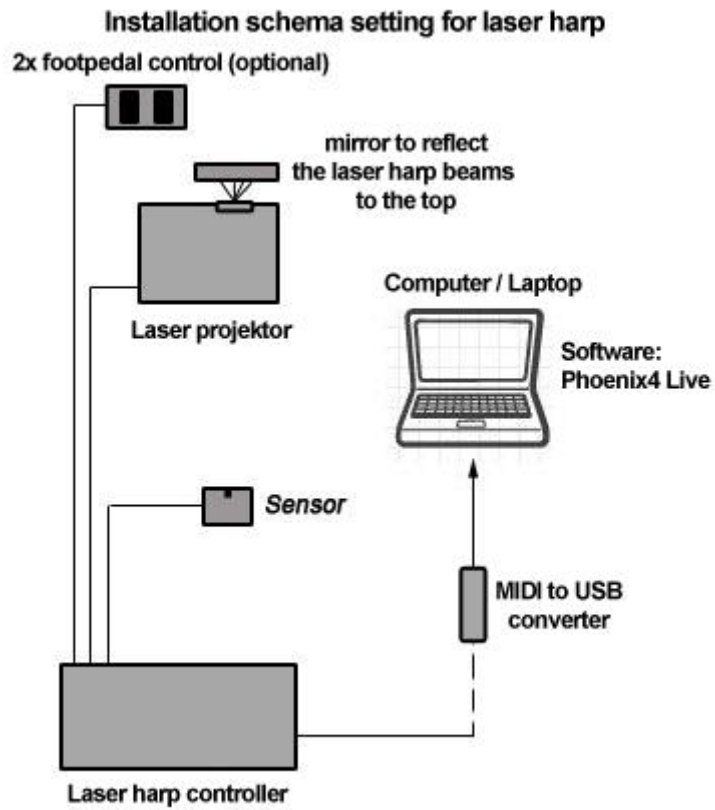
## **Laser harp manual**



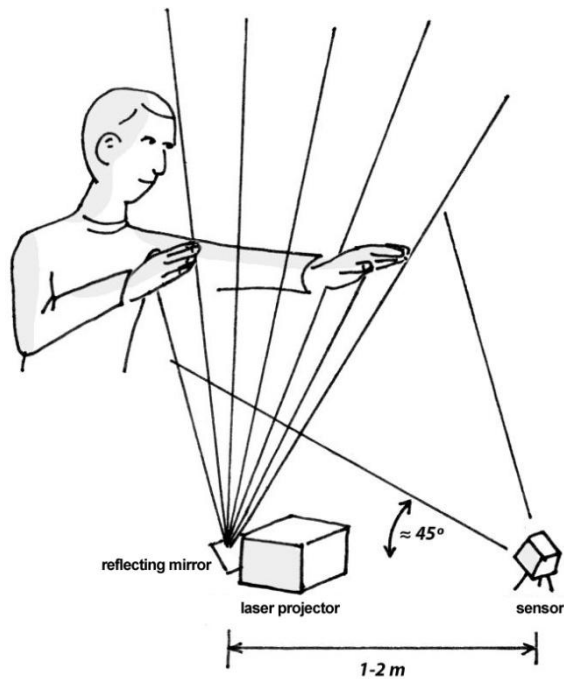
PHOENIX Showcontroller GmbH & Co.KG \* [www.Phoenix-Showcontroller.de](http://www.Phoenix-Showcontroller.de)  
Reproduction and publication of this document, in whole or in part not allowed without  
the express permission of the publisher. Amendments and errors reserved..

© 2012 All rights reserved

Connect the laser harp as described in the installation manual.



Be sure to place the sensor in a convenient angle (about 45 degrees) to the laser beam output.

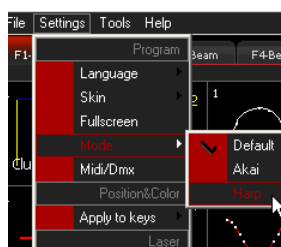




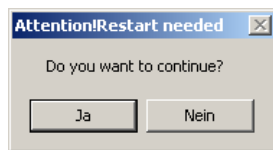
Open the „Phoenix4 Showcontroller“ desktop icon.



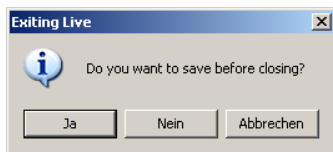
Open Phoenix4 Live.



If you are not in Harp mode, please change to it, by choosing „Settings>Mode>Harp“ from the top menu.



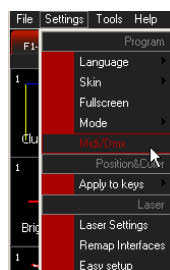
You get the dialog window that Phoenix4 Live needs to be restarted. Confirm this by clicking „Yes“.



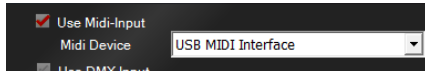
Then you get the chance to save the last changes.



Phoenix4 Live starts with the harp optimized user interface.



Afterwards activate the MIDI-In function in the software. Open the Phoenix4 Live MIDI/DMX settings at „Settings>MIDI/DMX“ at the top menu.



Activate the „Use Midi-Input“ function. Choose the „USB MIDI Interface“ from the Drop-Down Box as Midi Device.



Set value 48 for „Effect-Startadress“.

- Bank Startadress = 1
- Effect-Startadress = 48
- Button Startadress = 114
- Scanner-Startadress = 104
- Slider-Startadress = 88
- MasterSliders = 120
- GlobalDmx = 130
- LaserOnOff = 140
- Fog = 145

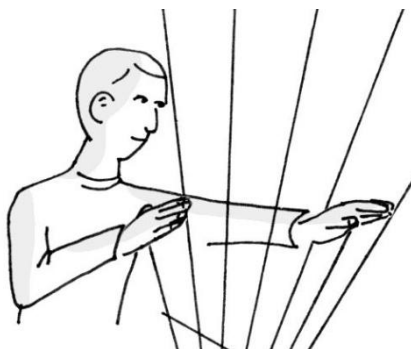
We advice you to set those values for DMX for the laser harp use.



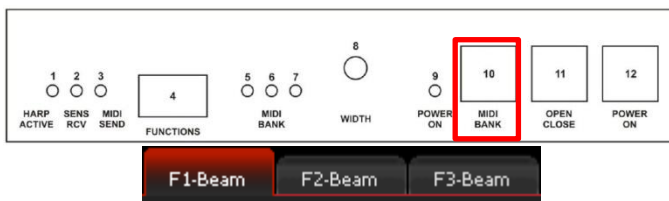
Close the window by click on the „OK“ button.



Switch on the laser by activating the „Laser ON/Off“ button.



You can now trigger the animation in Phoenix4 Live by interrupting the laser generated harp strings.



The effect banks at Phoenix4 Live are switched automatically if you change the banks at the laser harp controller and an animation is triggered by interrupting the laser beams.

We hope you enjoy the usage of the laser harp.

Please email suggestions, wishes and questions to  
[support@phoenix-showcontroller.de](mailto:support@phoenix-showcontroller.de).

**PHOENIX<sup>4</sup>**  
*THE PROFESSIONAL SHOWCONTROLLER*



[www.phoenix-showcontroller.de](http://www.phoenix-showcontroller.de)